



ITS CHARACTERISTICS

This intimate garden of just 3,000 m² has been planted with espaliers to maximise its greenery and give it a landscaped feel. **Managed sustainably and ecologically** with precise guidelines, the botanical garden is home to a rich biodiversity. **It features a collection of remarkable plants**, classified by colour with perennials, shrubs and trees, comprising almost 1,000 different taxa.



ITS HISTORY

In 1990, the City of Bayonne decided to create a botanical garden on the top of the ramparts near the War Memorial, and more specifically above the counterguard of the **Châteaux-Vieux**. During its construction, the town reused materials, stones and paving stones from various sites. **Today, more than 50,000 people visit the garden every year.**



Plant diversity at the heart of the historic centre



APRIL TO SEPTEMBER:
10AM-6PM

- The garden is closed during the Bayonne festival and on public holidays.
- The exhibition room is open from 10am to 12.30pm and from 1.30pm to 5pm. Free admission.
- Pets are not allowed, except for guide dogs.
- Parking at Place des Basques and Paulmy car park.

bayonne.fr

Allée des Tarrides • +33 (0)5 59 46 60 60



"Antoinette tells you about the garden"

VILLE DE BAYONNE-DIRECTION DE LA COMMUNICATION- AVRIL 2024- PHOTOCOUDY © LAETITIA TOMASSI - GRAPHISME: MC HONDELATTE - IMPRIMERIE CERTIFIÉE LABEL IMPRIM'VERT - NE PAS JETER SUR LA VOIE PUBLIQUE

the botanical garden

Bayonne*
BAIONA-PAYS BASQUE

EN

A genuinely educational tool and a green setting right in the heart of the city, the botanical garden is located above the ramparts opposite the cathedral. Boasting a large collection of remarkable plants, its exotic character will take you on a voyage of discovery.



AQUATIC ENVIRONMENT



Come and discover wetland fauna and flora, with turtles, frogs and carp in a pond topped by a Japanese-inspired half-moon bridge with a waterfall.

EXHIBITION ROOM

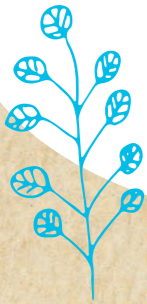
Temporary exhibitions on the themes of flora and fauna.

BAMBOO GROVE

A collection of remarkable bamboos up to 7 metres high, with a palette of colours ranging from yellow and green to black.



AZURE ATMOSPHERE



A palette of blue perennials with agapanthus, corydalis and geraniums.



SCENT OF ASIA

Collection of Asian plants, resplendent in summer and autumn. You'll see anemones, camellias, Japanese maples and a cryptomeria.

ENTRY

GROUND COVER



This area with creeping plants is located in the driest part of the garden. There are Monterey pines, ophiopogons, lysimachias and vincas.

PALETTE OF REDS



Collection of shrubs and perennials with red flowers, including sage, echinacea and peonies.

A VIEW OF OUR HERITAGE

SHADES OF YELLOW

Yellow is one of the most widespread colours in horticultural flowers. Come and see daylilies, tree peonies, rockroses and irises.

